



Malaviya National Institute of Technology, Jaipur

Placement Report 2022-23

UG Placement Statistics

S.No.	Branch	Registered Students	Students Placed	% of Placed Students	Average (LPA)	Median (LPA)	Highest (LPA)
1	ARCHITECTURE AND PLANNING	57	43	75.44	4.75	3.99	7.5
2	CHEMICAL ENGINEERING	106	90	84.91	10.23	8.95	40
3	CIVIL ENGINEERING	104	62	59.62	8.50	8.1	21
4	COMPUTER SCIENCE AND ENGINEERING	118	99	83.90	20.96	18	57.75
5	ELECTRICAL ENGINEERING	103	93	90.29	15.66	14.1	62.75
6	ELECTRONICS AND COMMUNICATION ENGINEERING	110	98	89.09	17.19	15	64
7	MECHANICAL ENGINEERING	112	99	88.39	10.74	9.67	22
8	METALLURGICAL AND MATERIALS ENGINEERING	96	73	76.04	10.18	9.45	40
Grand Total		806	657	81.51	13.20	11	64

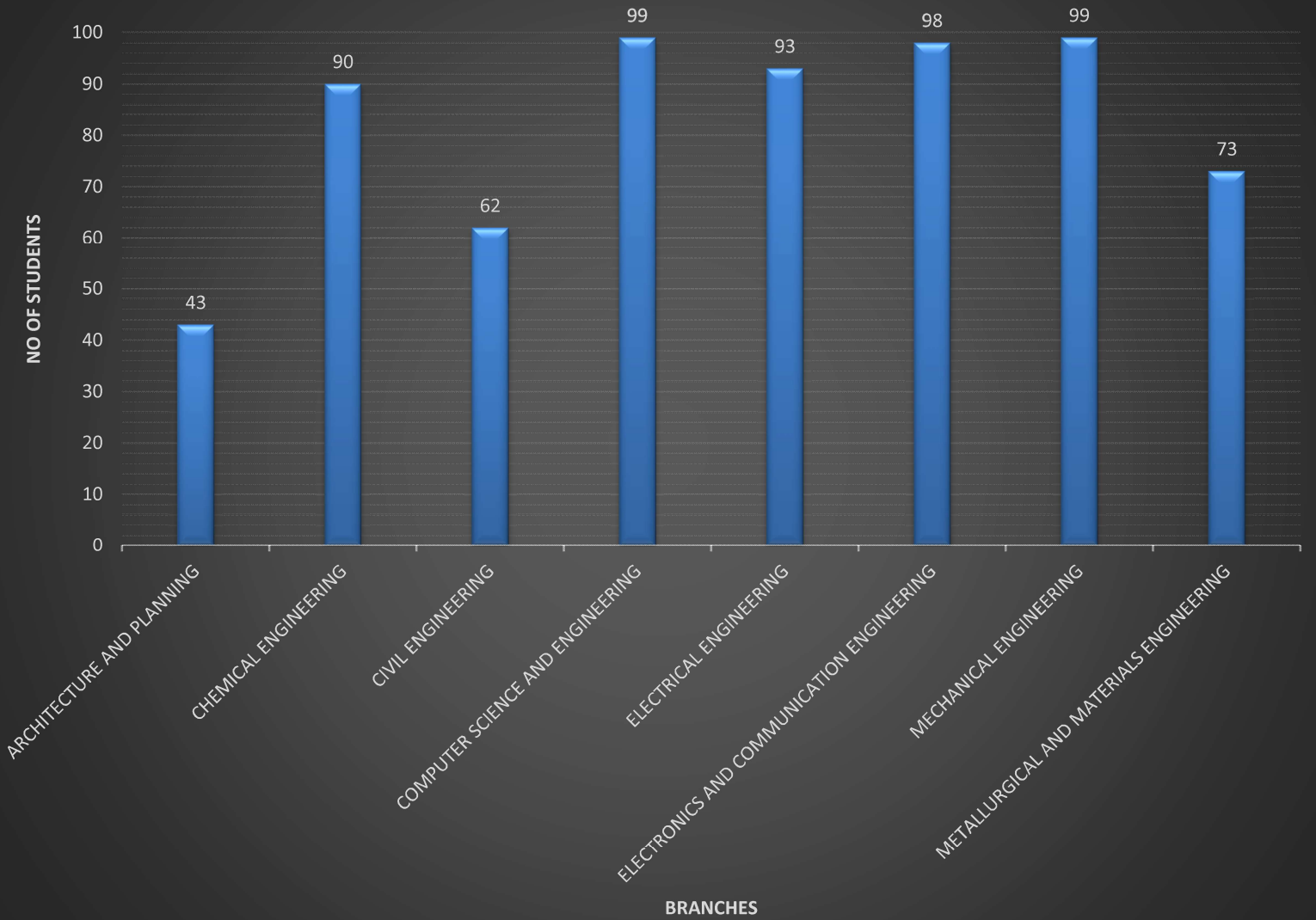
PG Placement Statistics

S.No.	Branch	Registered Student	Students Placed	% of Placed Students	Average (LPA)	Median (LPA)	Highest (LPA)
1	ARCHITECTURE AND PLANNING	7	4	57.14	4.08	3.6	5.5
2	CENTRE FOR ENERGY AND ENVIRONMENT	17	16	94.12	7.66	6	13.58
3	CHEMICAL ENGINEERING	8	8	100.00	6.87	5.25	13.58
4	CHEMISTRY	21	14	66.67	6.50	7	8
5	CIVIL ENGINEERING	51	28	54.90	7.28	6.25	13.58
6	COMPUTER SCIENCE AND ENGINEERING	46	34	78.91	17.03	12	48
7	ELECTRICAL ENGINEERING	50	32	64.00	11.05	10.31	37.49
8	ELECTRONICS AND COMMUNICATION ENGINEERING	70	37	52.86	15.98	12	37.49
9	MANAGEMENT STUDIES	28	28	100.00	9.20	9.8	16
10	MATHEMATICS	17	12	70.59	6.26	7	8
11	MECHANICAL ENGINEERING	52	42	80.77	9.26	10	15
12	METALLURGICAL AND MATERIALS ENGINEERING	4	4	100.00	9.00	9.25	10.5
13	NATIONAL CENTRE FOR DISASTER MITIGATION AND MANAGEMENT	7	2	28.57	6.00	6	6
14	PHYSICS	32	13	40.63	6.34	7	7.2
Grand Total		410	274	66.10	10.45	9.5	48

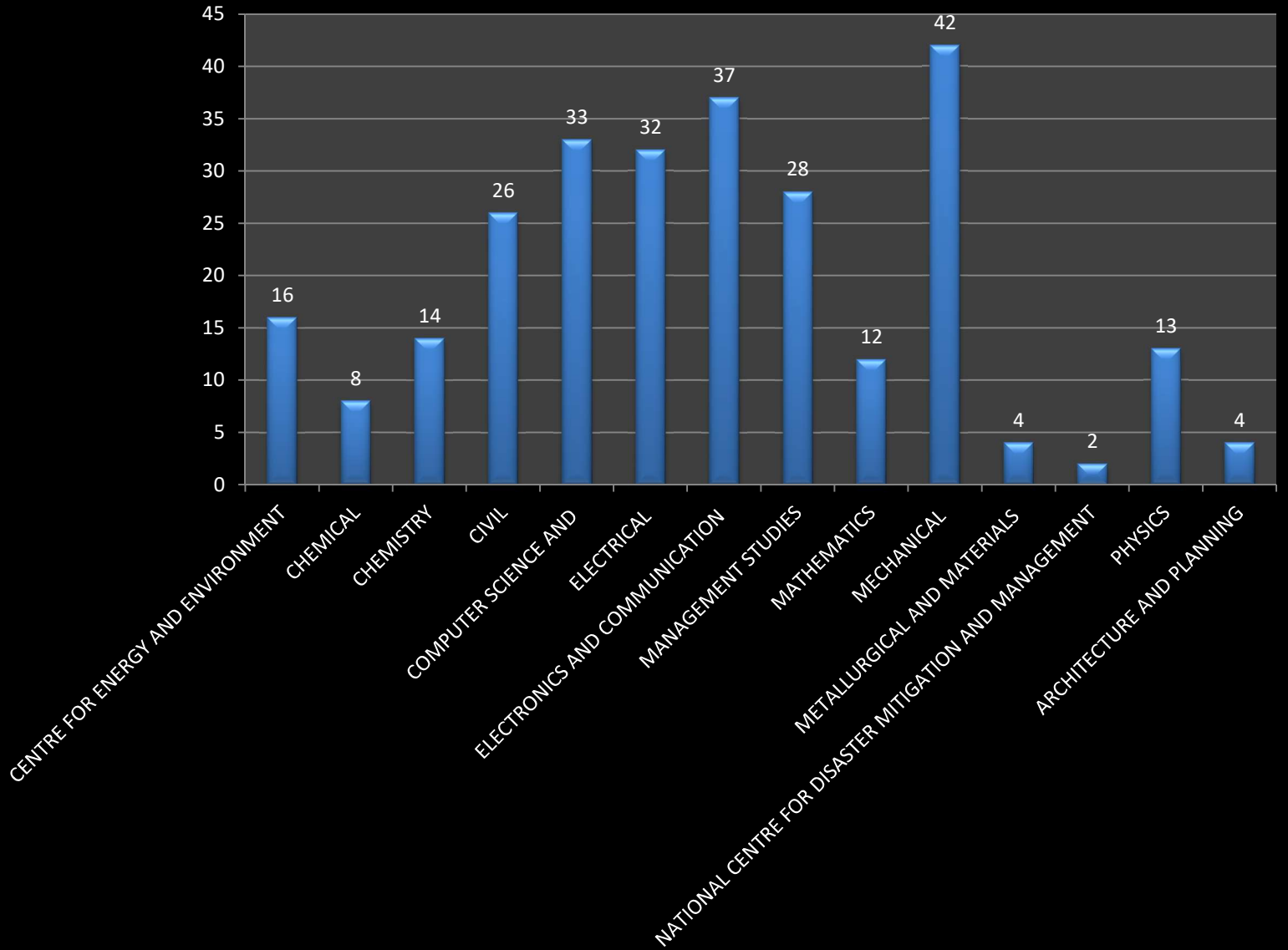
PG Stats Specialization Wise

S. No.	Specialization	No. of Students Placed	Average of Package	Max of Package
1	MANAGEMENT STUDIES	28	9.20	16
2	CHEMICAL ENGINEERING	8	6.87	13.58
3	CHEMISTRY	14	6.50	8
4	CIVIL ENGINEERING (DISASTER ASSESSMENT AND MITIGATION)	4	6.54	8
5	COMPUTER SCIENCE AND ENGINEERING	19	15.95	48
6	COMPUTER SCIENCE AND INFORMATION SECURITY	15	18.33	48
7	DESIGN ENGINEERING	16	9.69	12
8	EARTHQUAKE ENGINEERING	2	6.00	6
9	ELECTRONICS & COMMUNICATION ENGINEERING	11	14.04	32.46
10	EMBEDDED SYSTEMS	10	17.23	30
11	ENVIRONMENTAL ENGINEERING	6	5.91	8.3
12	INDUSTRIAL ENGINEERING	8	9.31	10.5
13	MATHEMATICS	12	6.26	8
14	METALLURGICAL & MATERIALS ENGINEERING	4	9.00	10.5
15	PHYSICS	13	6.34	7.2
16	POWER ELECTRONICS AND DRIVES	15	10.83	20
17	POWER SYSTEMS	11	12.21	37.49
18	POWER SYSTEMS MANAGEMENT	6	9.47	11
19	PRODUCTION ENGINEERING	8	9.38	13
20	RENEWABLE ENERGY	16	7.66	13.58
21	STRUCTURAL ENGINEERING	7	7.72	12.88
22	THERMAL ENGINEERING	10	8.46	15
23	TRANSPORTATION ENGINEERING	7	7.22	11
24	URBAN PLANNING	4	4.08	5.5
25	VLSI DESIGN	9	18.49	37.49
26	WATER RESOURCES ENGINEERING	4	9.02	13.58
27	WIRELESS AND OPTICAL COMMUNICATION	7	13.99	30
Grand Total		274	10.42	48

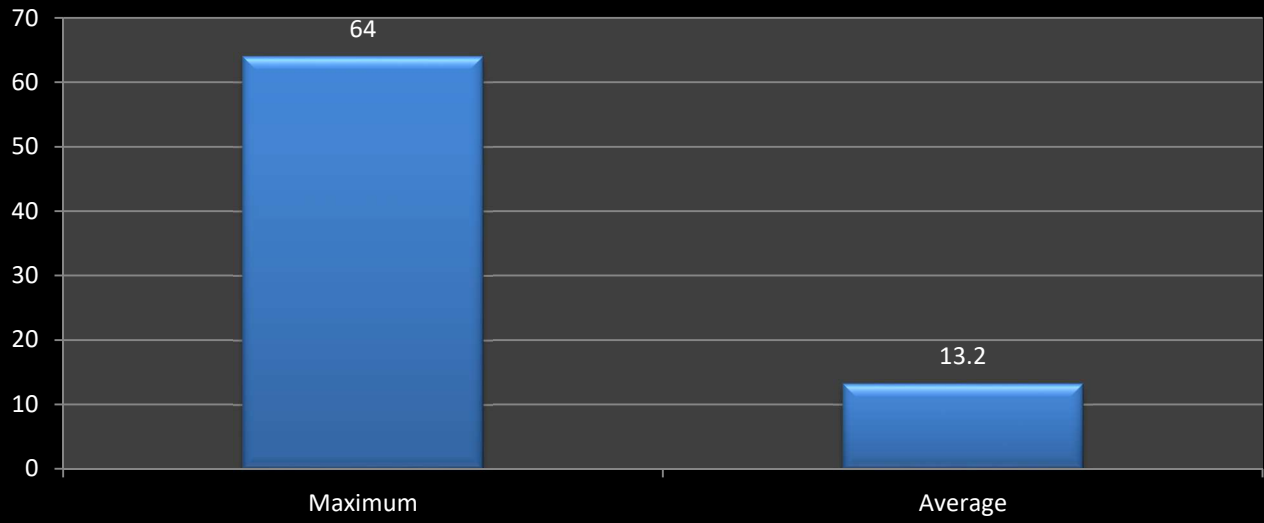
UG No. of Placed students



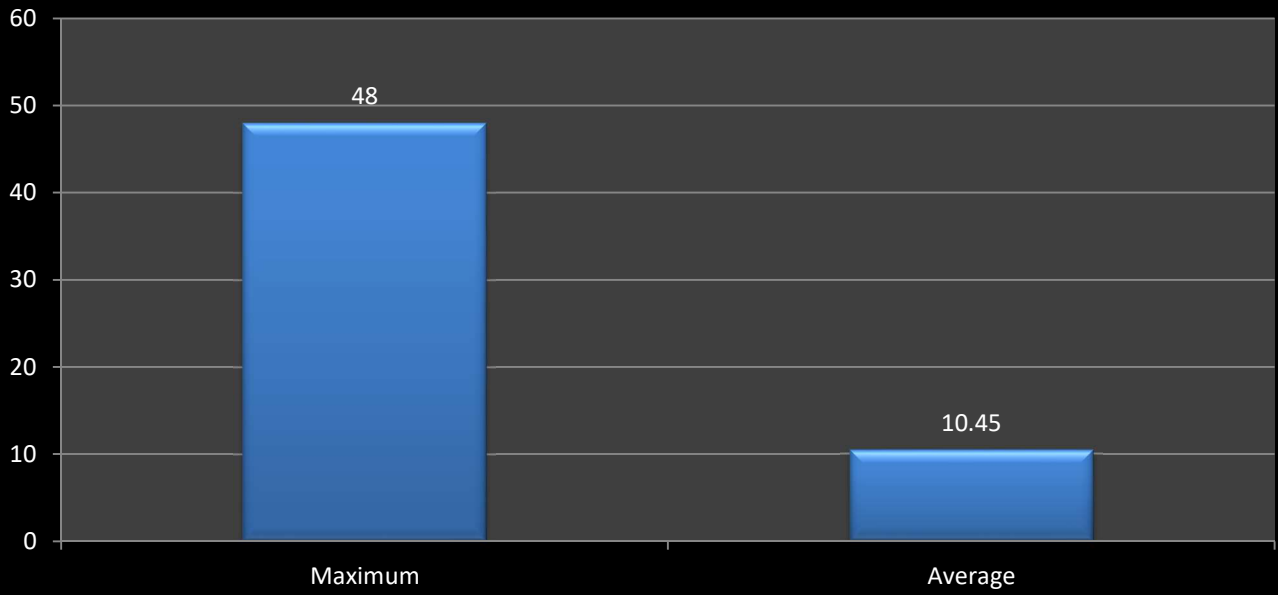
PG- No. of Placed Students



Package Details (UG)



Package Details (PG)



Salient Features of Placement Session 2022-23

- Number of Students who have been given Pre Placement Offers (PPOs) –122
- Numbers of Companies Visited –250+

PROMINENT COMPANIES VISITED

Addverb, Adobe, Airtel, Amazon, Analytics Quotient (Kantar), Apple, Arcesium, Bajaj Motors, BEL, BHEL, Box 8, BPCL, ICICI Bank, Expedia, Micron, Wells Fargo, Cape Gemini, CommVault, Dassault Systems, Deloitte, De Shaw, Deutsche Bank, EIL, Flipkart, GAIL, GEP, Goldman Sachs, Hero MotoCorp, HPCL, Ixigo, JCB, JP Morgan, L&T, Maruti Suzuki, Math works, MediaTek, Mercedes Benz, Micron, Oracle, Paisa Bazaar, Paytm, Qualcomm, Reliance, Salesforce, Samsung Electronics, Samsung R&D, Siemens, Suzuki Motors, Tata Motors, Tata Power, Tata Steel, Texas Instruments, Toshiba etc.